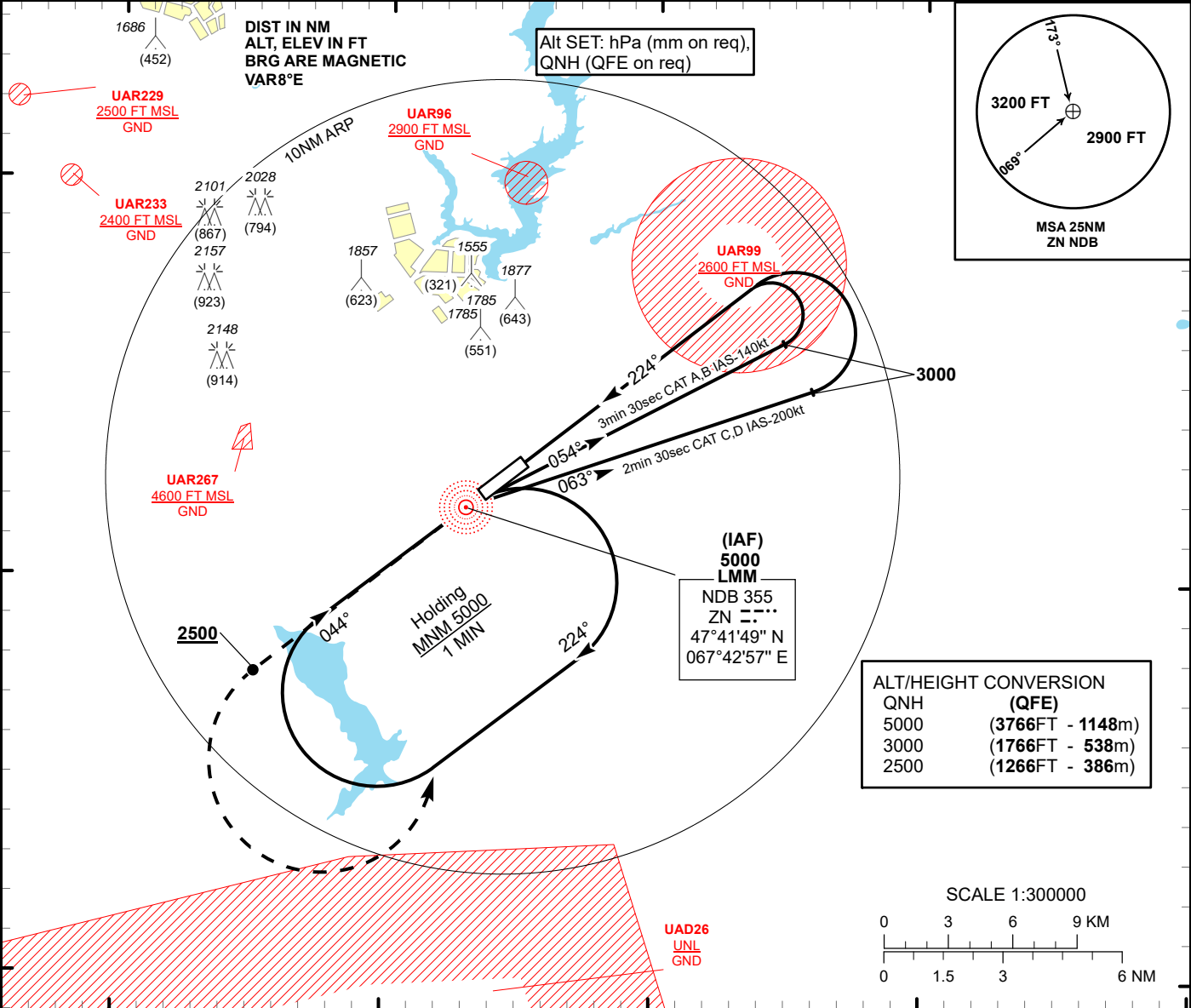


INSTRUMENT
APPROACH
CHART - ICAO

AERODROME ELEV 1251 FT
HEIGHTS RELATED TO
THR RWY 22 ELEV 1234 FT

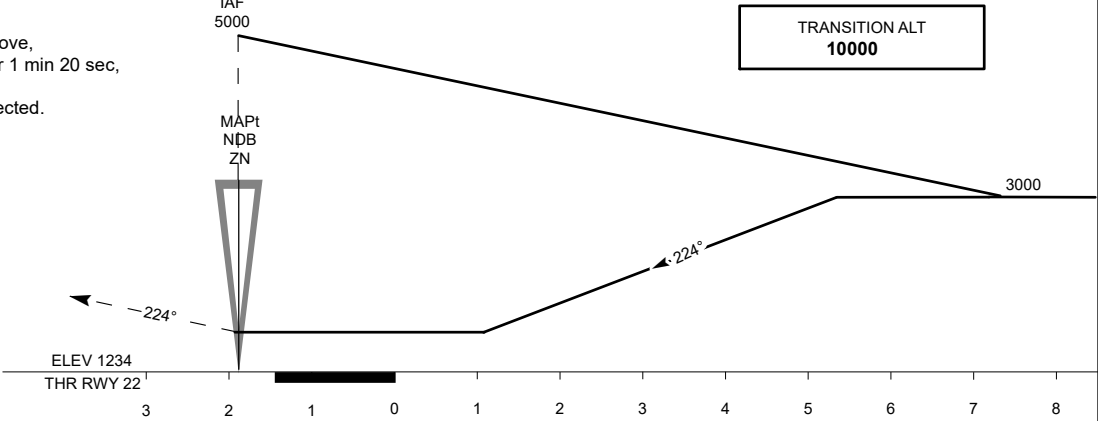
ZHEZKAZGAN TOWER 127.1
ZHEZKAZGAN ATIS (EN) 131.4
ZHEZKAZGAN ATIS (RU) 122.4

ZHEZKAZGAN
BC NDB
RWY 22



MISSED APPROACH

Climb on track 224° to 2500 or above, after passing ZN maintain 224° for 1 min 20 sec, then turn LEFT to ZN.
Climb initially to 3000, then as directed.
RADIO FAILURE:
In the case of RCF climb to 5000 to ZN and join to holding pattern.
Missed approach turn speed limited to 250kt IAS maximum.



| Aircraft Category | | A | B | C | D |
|---|--------|-----------|-----------|-----------|-----------|
| Straight-in Approach OCA/H | BC NDB | 1640(400) | 1640(400) | 1640(400) | 1640(400) |
| | | | | | |
| | | | | | |
| Aerodrome Operating Minima MDH ft x RVR (CMV) | | | | | |
| BC NDB | | | | | |
| | | | | | |
| | | | | | |

ZHEZKAZGAN
BC NDB

AERONAUTICAL DATA TABULATION

| NDB approach to RWY22 from NDB ZN | |
|-----------------------------------|----------------------------------|
| Fix/point | Coordinates |
| LMM NDB ZN | 47° 41' 48.7"N 067° 42' 56.9"E |
| THR RWY22 | 47° 42' 58.68"N 067° 45' 07.14"E |